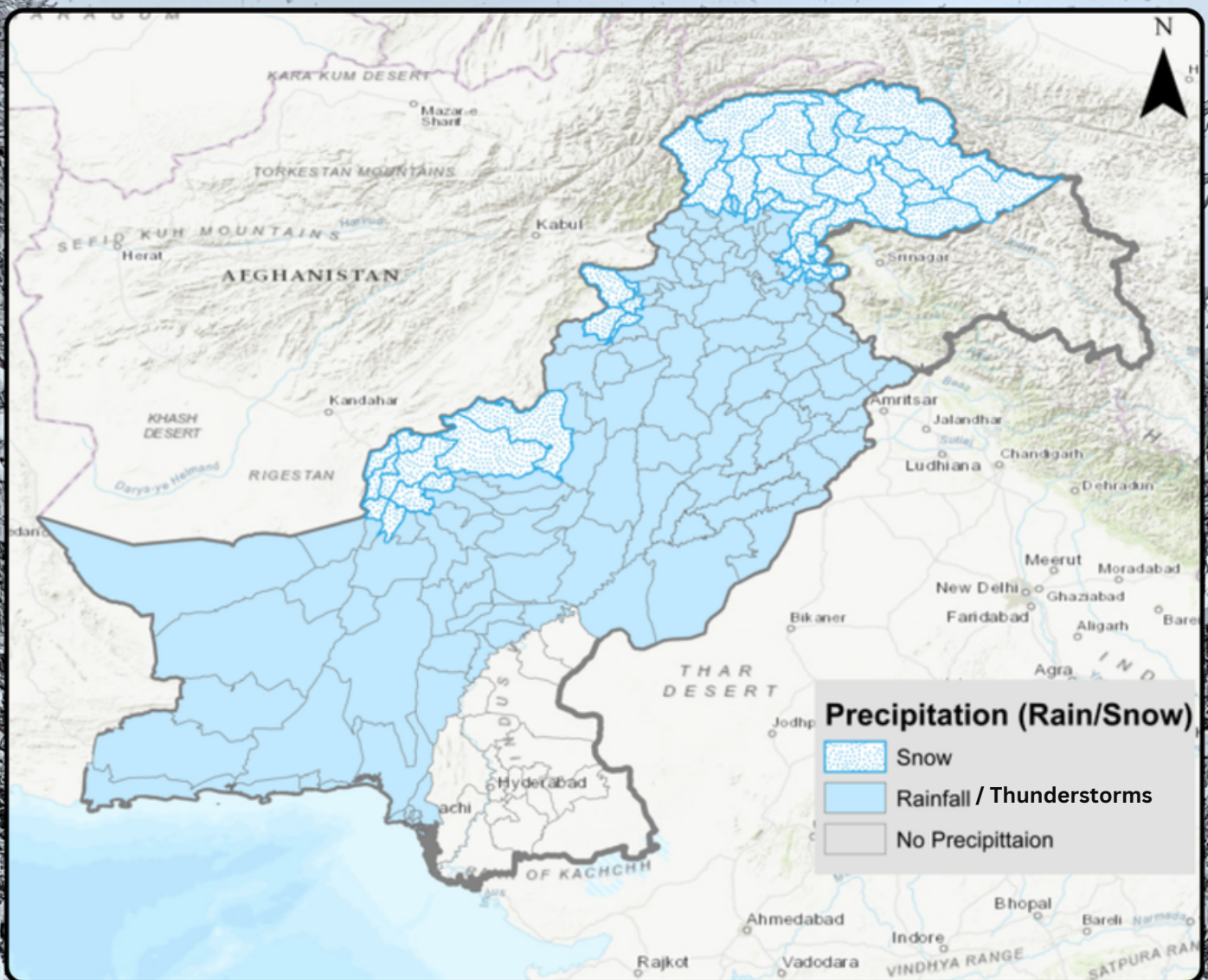




# PRECIPITATION PROJECTION (31 JANUARY 2024 TO 05 FEBRUARY 2024)

Developed by National Emergencies Operation Center  
National Disaster Management Authority



## PRECIPITATION ADVISORY

- A westerly wave is currently affecting the whole country and is expected to continue until **05 February, 2024**.
- Anticipated weather patterns indicate the likelihood of substantial Precipitation (**Rain/Snow**) in Gilgit-Baltistan, Khyber Pakhtunkhwa, Kashmir, Punjab, Balochistan, Islamabad, and specific regions of Sindh.

### Potential Impacts:

- Anticipate slippery road conditions, travel disruptions and road closures in Precipitation (Rain/Snow) affected areas.
- Snow avalanches and localized landslides may occur due to heavy rain in high-elevated areas.
- Flash floods are expected in areas of Balochistan receiving heavy rainfall.
- Power outages may be possible due to the weight of snow on power lines.

### Precautions:

- Avoid non-essential travel during the snowfall projection periods.
- Stay updated on weather and road conditions through official channels and local news.
- Use caution while driving, and equip your vehicle with snow chains if necessary.
- Dress warmly in layers and cover exposed skin to protect against the cold.
- Report any emergencies promptly to local authorities.